

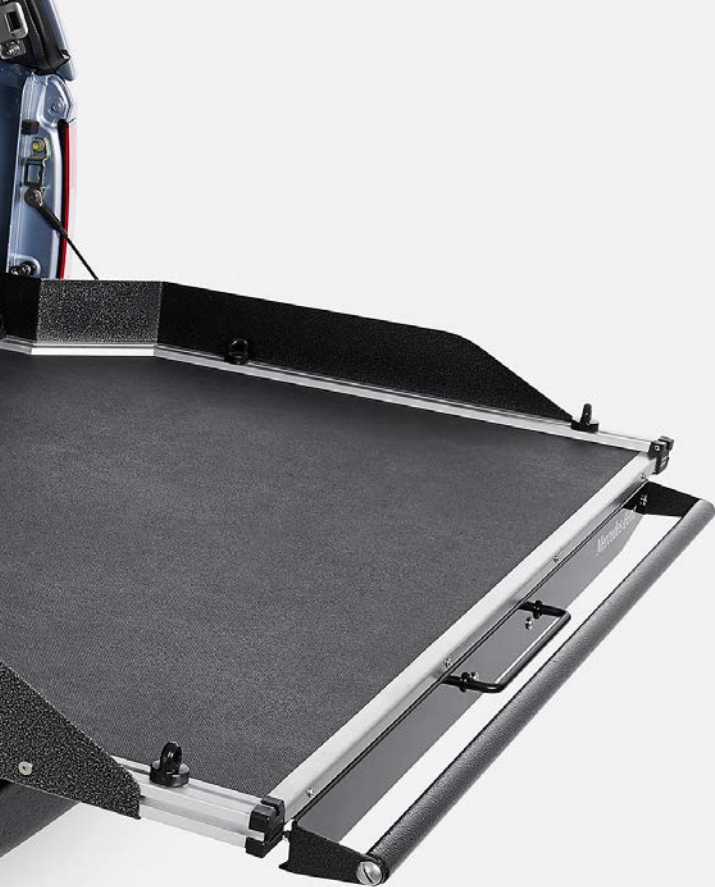
# X-Class Genuine Accessories



Mercedes-Benz







## Genuine Accessories for your X-Class.

Crafted by Mercedes-Benz, styled by you. With a wide range of styling options, storage solutions and wheels to choose from, you can make the X-Class your own. The styling components have been designed to enhance the form of the X-Class, but that doesn't mean function is forgotten – far from it. Each element has been developed to do its job as effectively as possible, while delivering quality that's built to last.

01 Canopies	04
02 Protection	07
03 Exterior	08
04 Load Bed	12
05 Towing	15
06 Roof Storage	16
07 Electrical	16
08 Wheels	18
09 Wheel Accessories	19
10 Interior	20

# Canopies

	Part Number
01 <b>Sports Canopy.</b> Designed specifically for the X-Class with a focus on style. Flush, no handle design. Advanced integration with the vehicle's central locking system and instrument cluster. Central locking on all lift-up windows using vehicle's remote. Tinted windows. Fully lined interior. Bright easy-to-reach interior LED light. Mercedes-Benz branding on tailgate window. Available with or without roof rails. One side window variant available: LHS lift-up / RHS pop-out. Roof load rating: 150kg for canopy version with roof rails. ABS plastic.	On Request
02 <b>Touring Canopy.</b> Designed specifically for the X-Class with a focus on maximising cargo volume and side access. No drill installation. Three side window variants available LHS lift-up / RHS lift-up, LHS lift-up / RHS sliding, and LHS sliding / RHS sliding. Tinted windows. Central locking standard on all lift-up windows using vehicle's remote. Fully lined interior. Bright easy-to-reach interior LED light. Single handle on all lift-up windows allows one handed window opening. Large window openings for maximum side access to the load bed. Sliding window units are key lockable dual action with both front and rear panes openable. Mercedes-Benz branding on tailgate window. Optional roof rails available at additional cost. Roof load ratings of 100kg dynamic and 400kg static. Fibreglass.	On Request



01  
02







01 02  
03 04

# Protection

	Part Number
<b>Nudge Bar.</b> Engineered to help protect the front of your X-Class with its substantial 76mm diameter steel tubes with underride protection. Compatible with all X-Class safety systems, parking sensors and front camera. Includes mounting points for aerials (above the top tube) and LED light bar (below the top tube). Perfectly complements the Side Bar Steps and Styling Bar.	
01 <b>Polished stainless steel</b>	A4708800100
NP <b>Black, steel</b>	A4708804101
NP <b>Bull Bar.</b> Engineered specifically for the X-Class and crash tested on the vehicle. Compatible with all X-Class safety systems, parking sensors and front camera. Includes mounting points for aerials and LED light bar.	
02 <b>Polished alloy</b>	A4708804501
NP <b>Black alloy</b>	A4708804601
03 <b>Underbody Protection.</b> The 3-piece steel panels help to protect the engine and transmission. Suits 4 cylinder Automatic models only.	A4705200000

# Exterior

	Part Number
01 <b>Sports Bar.</b> Add additional style to your X-Class with the seamlessly integrated Sports Bar, painted in the colour of your vehicle. Includes an integrated high mount brake light. Can be combined with the Sports Bar Roll Cover (as pictured) for maximum versatility.	On Request
<b>Styling Bar.</b> The perfect accompaniment to the striking and robust ute design and lends the vehicle an even more progressive appearance. The Styling Bar can be combined with the Hard Tonneau Cover for even greater appeal.	
02 <b>Polished.</b> Suits Hard Tonneau Cover. (As pictured)	A4708902100
NP <b>Black.</b> Suits Hard Tonneau Cover.	A4708902300
NP <b>Polished.</b> Suits no cover or Soft Tonneau Cover.	A4708902000
03 <b>Black.</b> Suits no cover or Soft Tonneau Cover.	A4708902200
<b>Side Bar Steps.</b> The Steel Tube Side Steps measure 76 mm in diameter and lend the vehicle a stylish and striking side design which further emphasises its ute character. In addition to enhancing the vehicle's appearance, the Side Bar Steps also serve as steps when boarding and exiting the vehicle and during loading and unloading the roof.	
04 <b>Black</b>	A4708501100
05 <b>Polished</b>	A4708501200





01 02  
04 05

03





01 02  
03 04



# Exterior

	Part Number
<b>Rollcover.</b> The aluminium Rollcover can be opened and closed in stages. Locking takes place via a separate key.	
01 <b>Black.</b> Not compatible with Sports Bar.	A4708511600
02 <b>Silver.</b> Not compatible with Sports Bar.	A4708511100
NP <b>Black.</b> Compatible with Sports Bar.	A4708511700
NP <b>Silver.</b> Compatible with Sports Bar.	A4708511200
<b>Hard Tonneau Cover.</b> ABS plastic. Thanks to the Hard Tonneau Cover's design and paint finish in the same colour as the vehicle, it blends into the design of the ute. It offers protection against weather and theft. It is unlocked via a separate key and has an LED light – meaning the cargo can be found quickly and easily even in the dark.	
03 <b>Hard Tonneau Cover for vehicles with Styling Bar</b>	On Request
NP <b>Hard Tonneau Cover for vehicles without Styling Bar</b>	On Request
<b>Soft Tonneau Cover.</b> The PVC Soft Tonneau Cover can protect the load from prying eyes. Additional fastenings and cross struts ensure that the load is provided with perfect protection and as little water can collect on the tarpaulin as possible. Rolling up the cover provides quick access to the load. When it is rolled up, the soft cover is secured to the bulkhead with 2 fastening straps. "Mercedes-Benz" lettering positioned in the centre at the rear.	
04 <b>Soft Tonneau Cover for vehicles with Styling Bar</b>	A4708511000
NP <b>Soft Tonneau Cover for vehicles without Styling Bar</b>	A4708510900
NP <b>Water and Dust Defence Kit.</b> Black, rubber. Consists of 3 seals at the tailgate, which help to protect the bed from water and dust. A seal is vertically attached to the edge of the bed on the left of the tailgate and another on the right. The third seal is secured horizontally to the underside of the tailgate so that it lies against the bottom of the bed when the tailgate is closed, in order to minimise the ingress of fluid or dust in this location.	A4707410100

# Load Bed

	Part Number
01 <b>Bed Liner.</b> Mercedes-Benz branded single piece under rail liner for the load bed and a separate liner for the tailgate. Compatible with all Mercedes-Benz canopies and load bed covers.	A4708511500
02 <b>Floor Load Anchoring Rails.</b> 4 load anchoring rails attached to the floor of the bed make it possible to help secure the load. Includes 4 removable tie-down eyes with stainless steel rings, which can be flexibly attached to the rails and used for lashing the load. For vehicles with Bed Liner.	A4708106000
03 <b>Storage Box.</b> Black, polyethylene. The lockable 3-way opening Storage Box provides plenty of room for tools or other equipment with its cargo volume of 156 L. It is robust, long-lasting, and water-resistant. The storage box is fitted in the load anchoring rail system and is adjustable along the length of the load bed.	A4705800000
04 <b>Bed Divider System.</b> The load area partitioning system subdivides the bed into 2 separate parts. It fixes the load and can help to transport cargo safely in the load area. The system is adjustable and is suitable for loads weighing up to 100 kg. It is fitted in the load anchoring system.	A4708510600
NP <b>Sliding Floor.</b> Providing easy access to your cargo, especially when a canopy (Shown on page 2) is fitted, the heavy-duty sliding floor allows you to utilise the full width and length of your load bed. Includes smart rail system with adjustable tie downs and grippy floor surface.	QCRB 788CBXD
05 <b>Tailgate Protector.</b> Protect the top of your tailgate from scratches and dents while also providing a soft surface on the tailgate for your knees when climbing into the load bed or sitting on the tailgate.	B64744703
NP <b>Tailgate Assist Damper.</b> For added safety and convenience the damper slows down the speed of the tailgate descent.	B64744700



01 02  
04 05

03







01 02





# Towing

	Part Number
01 <b>Towbar.</b> Heavy duty class 4 box hitch. Maximum towing capacities when fitted with a Mercedes-Benz Genuine Towbar: 3,500kg / 350kg downball on 4x4 models. 3,200kg / 350kg downball on 4x2 models. The kit includes tow bar, trailer ball mount, 50mm ball, tow ball cover, tow bar hitch cover, D-shackles and storage bag.	B64314700
NP <b>Trailer Wiring Harness.</b> The intelligent wiring harness offers a secure electrical connection between vehicle and trailer. German-engineered waterproof 7 pin flat.	B64544700
02 <b>Electric Trailer Brake Controller.</b> Offers two types of braking: proportional mode (inertia sensing) for highway conditions and user controlled model for off-road driving. Operates both electric and electric/hydraulic trailer brakes. AL-KO ESC and Dexter Sway Control System compliant. The remote head control dial is mounted on the dash and the electronic module is mounted out of sight. Proportional mode electric trailer braking measures the braking force applied by the vehicle and applies the electric trailer brakes to a proportional level. This provides a safe, smooth application of the electric trailer brakes, requiring little input from the driver once correctly installed and set up. User-controlled mode gives the driver complete control of the brake level whether the foot brake or override is applied. It has been designed to give the greatest possible control when driving off-road.	B64544701

# Roof Storage

	Part Number
01 <b>Roof Carrier Bars.</b> * For vehicle cabin roof rails. The support system for Mercedes-Benz roof attachments such as bicycle racks and ski / snowboard holders. The roof carrier bars are not compatible with the Touring Canopy roof rails.	A4708980000
02 <b>Roof Mounted Bicycle Rack.</b> * Each rack holds one bike. Picture shows vehicle with two Bicycle Racks fitted.	A0008900293
NP <b>Ski and Snowboard Rack, Standard.</b> * Suitable for Basic Carrier Bars for Roof Rails. Designed to hold max. 4 pairs of skis or 2 snowboards, depending on height of bindings.	A0008900493
03 <b>Ski and Snowboard Rack, Comfort.</b> * Suitable for Basic Carrier Bars for Roof Rails. Designed to hold max. 6 pairs of skis or 4 snowboards, depending on height of bindings.	A0008900393

# Electrical

	Part Number
NP <b>Vehicle Battery Charger with Trickle Charge function 5 A, for lead-acid and lithium batteries, AUS/NZ.</b> This compact, cutting-edge charger is specially tailored to Mercedes-Benz requirements. It “revives”, recharges, checks and maintains the charge.	A0009823421
NP <b>USB Power Charger.</b> For 12V socket.	A2138200803

\*Bicycle and skis/snowboard not included.





17" 01 02 18"



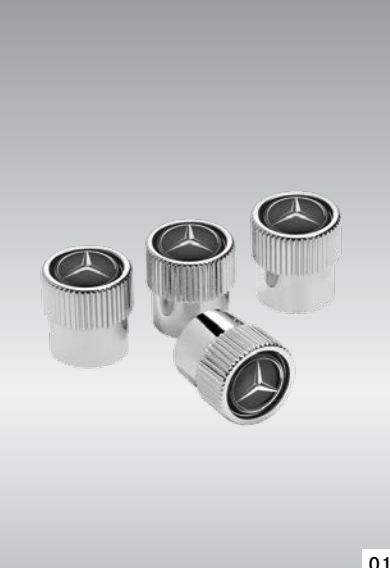
03 19"



## Wheels

				Part Number
01	<b>6-Spoke Wheel</b>	Finish: black, high sheen	Wheel: 17 inch, 7.5 J x 17 ET 50   Tyre: 255/65 R17	A4704010200
NP	<b>6-Spoke Wheel</b>	Finish: vanadium silver	Wheel: 17 inch, 7.5 J x 17 ET 50   Tyre: 255/65 R17	A4704015500
02	<b>5-Twin-Spoke Wheel</b>	Finish: black, high sheen	Wheel: 18 inch, 7.5 J x 18 ET 50   Tyre: 255/60 R18	A4704010300
NP	<b>6-Twin-Spoke Wheel</b>	Finish: Himalaya grey	Wheel: 18 inch, 7.5 J x 18 ET 50   Tyre: 255/60 R18	A4704015600
03	<b>Multi-Spoke Wheel</b>	Finish: termolite metallic, high-sheen	Wheel: 19 inch, 7.5 J x 19 ET 50   Tyre: 255/55 R19	A4704010400
NP	<b>6-Twin-Spoke Wheel</b>	Finish: black, high sheen	Wheel: 19 inch, 7.5 J x 19 ET 50   Tyre: 255/55 R19	A4704015700

\* Part Number is for individual wheels. Tyres, bolts, centre cap, valves are not included.



01 02



03



04



## Wheel Accessories

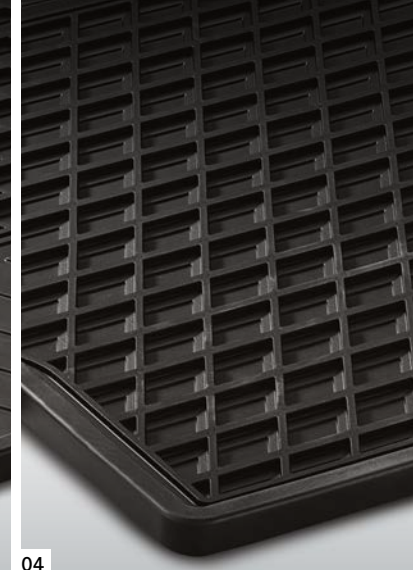
	Part Number
01 <b>Valve Cap.</b> Set of 4, chrome. Decorative caps for valves, black.	B66472002
02 <b>Spare Wheel Lock.</b> Protect your valuable spare wheel from theft.	A4700000040
03 <b>Tyre Pressure Gauge.</b> Black, plastic. Compact, analogue tyre air pressure gauge.	B66588140
04 <b>Rim Lock Set.</b> Protect your valuable light-alloy wheels from theft.	A0009907119



01 02



03



04

## Interior

	Part Number
01 <b>Velour Floor Mats, Front.</b> 2-piece, black. 100% polyamide velour, with fastening system. High-quality design. Odourless, antistatic, flame-resistant.	A47068001009J74
02 <b>Velour Floor Mats, Rear.</b> 2-piece, black. Velour mat, with classic-cut pile for the rear.	A47068006009J74
03 <b>Rubber Floor Mats, Front.</b> 2-piece, black rubber floor mats in a diamond design, water gathers in recessed areas and raised edge prevents spillage. Branded with Mercedes-Benz star logo. Original fastening system.	A47068011009G33
04 <b>Rubber Floor Mats, Rear.</b> Single, black rubber floor mats in a diamond design, set of 1, covers the foot well areas and transmission tunnel: any water gathers in recessed areas and raised edge prevents spillage.	A47068017009G33




This image shows a single sheet of white paper with horizontal ruling lines. The lines are evenly spaced and run across the width of the page. There are no margins, text, or other markings on the paper.





## X-Class Accessories Brochure

This brochure has been compiled by Daimler AG of Germany or one of its Group Companies to provide a general indication only of the range of vehicles, optional extras, accessories, merchandise and/or products (together, the range is known as the "Products") available in various countries. Some of the Products shown may not be available in Australia, or may only be available in a different specification. Additionally, some Products may only be available in combination with others. Colours may differ slightly from those shown in the brochure, owing to the limitations of the printing process. Products available while stocks last. Changes may have been made to the Products since this brochure was printed. The information in this brochure is therefore indicative, illustrative and provided only for guidance and should not be relied upon. For current information on the availability, design, features and prices of Products available in Australia you should contact your local authorised Mercedes-Benz Retailer. October 2019.

The  and the words Mercedes-Benz are registered trademarks of Daimler AG, Stuttgart, Germany.

Mercedes-Benz Australia Pacific Pty Ltd, ABN 23 004 411 410, Lexia Place, Mulgrave, Victoria 3170.  
Telephone: (03) 9566 9266. Facsimile: (03) 9562 6282. Website: [www.mercedes-benz.com.au](http://www.mercedes-benz.com.au)